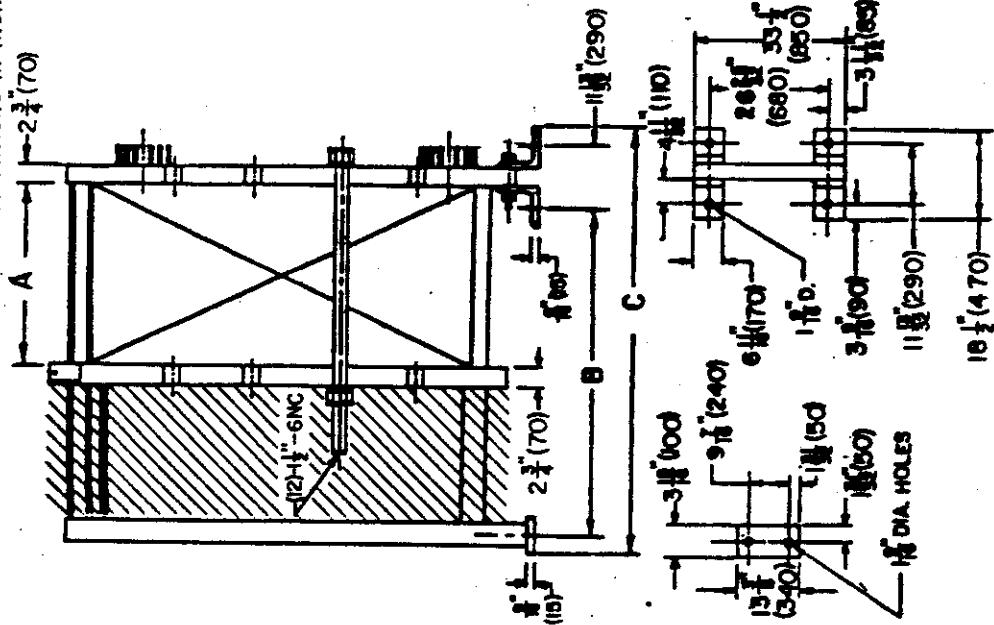


DIMENSIONS IN INCHES & MILLIMETERS



↑ DENOTES PROPER DIMENSIONS FOR THIS ORDER

C	LC #	B	LT	MAX. NO. OF PLATES 0.5 mm 0.8 mm
61 1/2 (1550)	47 1/2 (1200)	44 3/4 (1120)	4 1/8 (1050)	131
84 3/4 (2150)	70 1/8 (1800)	67 3/8 (1720)	6 1/4 (1650)	249
108 3/4 (2750)	94 1/2 (2400)	91 1/8 (2320)	8 3/4 (2250)	367

A-PLATE PACK LENGTH
N- NUMBER OF PLATES *
B- FOUNDATION BOLT HOLE CENTER
LC-CARRYING BAR LENGTH *
LT-TIGHTENING BOLT LENGTH
THIS TABLE INDICATES STANDARD LENGTHS ONLY.

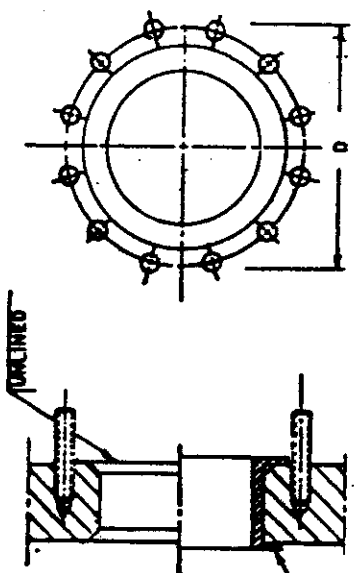
A-3.7-N (A DIMENSION IN mm)

COVERS SA-946, 90
COVER BOLTS SA-193, 87
NUTS SA-194, 2H
STUD BOLTS SA-193, 87

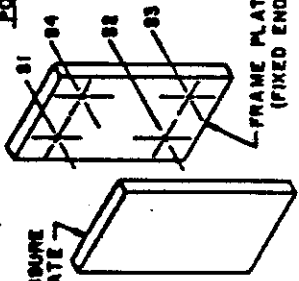
FIELDS MARKED WITH [Hatched] SHOULD BE KEPT FREE FROM FIXED INSTALLATIONS

Material Size	Standard	D	g
B (200)	ANSI 150	1 1/2	6 STUD BOLTS 1/2"-10UNC

Location	Size	Material	Function
S4	6" 150#	COLDSIDE OUT	S.S.
S3	6" 150#	COLDSIDE IN	S.S.
S2	6" 150#	HOTSIDE OUT	S.S.
S1	6" 150#	HOTSIDE IN	S.S.
			MAT'L



* CONNECTION POSITIONS



PRESSURE PLATE

Signature _____ Date _____

By: [Signature]

Date	Rev.	By	App.
9/24/84	A-3.5N W/S A-3.6N	[Signature]	[Signature]

DESIGNED, CONSTRUCTED & N. B. STAMPED IN ACCORDANCE WITH A.S.M.E. CODE SECTION VIII 1983 EDITION, W'83 ADDENDUM. UNIT PROVIDED WITH O.S.H.A. TYPE ALUMINUM SPLASH PROTECTOR. UNIT PROVIDED WITH LIFT LUGS. * FOR ADDITIONAL INFORMATION ABOUT MATERIAL, CONNECTING, AND MEASUREMENT, SEE COMPUTER PRINTOUT.

CUSTOMER WAITINGER COMPANY INC.
P.O. NO. 368-0946
ITEM NO. VP-12037
MFG. NO. 30100-66977

TYPE: A20-BFG

ALFA-LAVAL INC
THERMAL SUPPLY UNIT
218 LIMWOOD AVENUE
FT. LEE, NEW JERSEY 07024
MANUFACTURED AT FOURMILKERS, N.Y.

978367-454-1

MEDIA	->WATER	=>WATER
FLOW RATE	1500 GPM	1500 GPM
TEMP. PROGRAM	87 TO 87 F	85 TO 95 F
PRESSURE DROP	12.0 PSI	12.0 PSI
LIQUID VOLUME	368.9 L	368.9 L
LOCATION OF CONNECTIONS		
INLET	S1	S3
OUTLET	S2	S4
MATERIAL IN CONNECTIONS	STAINLESS STEEL	STAINLESS STEEL
PLATES MATERIAL	AISI 304	
THICKNESS	0.5 MM	
FINISH		
GASKET MATERIAL	NITRILE	
HEAT TRANSFER SURFACE	253.59 M2	
PLATE GROUPING	1*119H ----- 1*119H	

PLATE NO.	PLATE NO.	CODE	PUNCHED CORNER OF THE PLATE				FLOW DIRECTION ON THE GASKET SIDE OF THE PLATE
			UPPER LEFT	LOWER LEFT	LOWER RIGHT	UPPER RIGHT	

			S	1	2	3	4	
				->-	<--	=<=	==>	
1	362220-0183B			0	0	0	0	--
2	362220-4103A			0	0	0	0===>==0	UP
3	362220-4103B			0	0	0	0	DOWN
4	362220-4103A			0	0	0	0	UP
5	362220-4103B			0	0	0	0	DOWN
6,	8...234	362220-4103A]]]])
7,	8...233	362220-4103B		[[[[(
235	362220-4103B			0	0	0	0	DOWN
236	362220-4103A			0	0	0	0	UP
237	362220-4103B			0	0	0	0	DOWN
238	362220-4103A			0	0	0	0===>==0	UP
239	362220-0116B			----	>---			DOWN

			T	1	2	3	4
--	--	--	---	---	---	---	---

MEASUREMENTS

PHE TYPE A20-BFG DATE 850522

DRAW.NO. 9783674541 ORDER NO. VP-12037

MANUF.NO. 30100-86877 TO NO. M41212

EO = 0.

EOD = 0.

SECTION 1	0.50/SS	238.*	3.40+	1.*	3.40	A
						812.6

TOTAL						812.6

NO. OF PLATES 239. (N =239.)

CALCULATED LENGTHS

CARRYING BAR 530.+A+1.30N+EO [(3.40+1.30)]= 1653.

TIGHTENING BOLT 320.+A+1.30N+EOD [(3.40+1.30)]= 1443.

ACTUAL LENGTHS

LC = 1800. [270.PL/ 918.MM]

LT = 1650. [283.PL/ 962.MM]

B = 1720.

H = 1950.

C = 2150.

NET WEIGHT = 3400.0 KG

LIQUID VOLUME = 740.0 L

CENTRE OF GRAVITY	EMPTY	FULL OF H2O
OUTSIDE FR.PL./FLOOR	520./1200.	510./1200.
MAX LOAD AT FEET		
SUPP.COL/FR.PL. [N]	19000./ 23000.	12000./ 28000.